

CHAPTER GUIDE

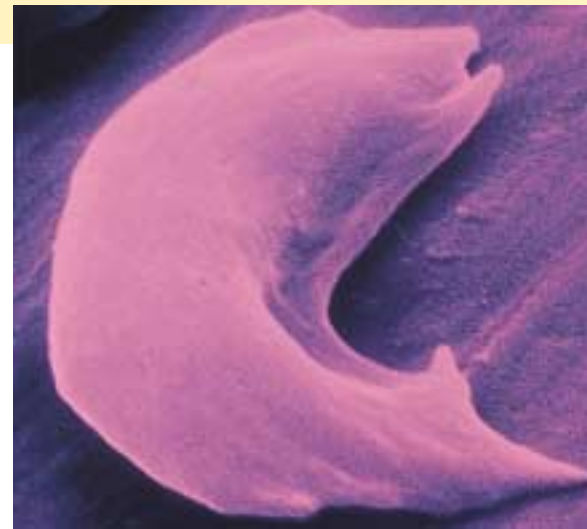
How are human traits inherited?

- 14.1** Some human traits are caused by dominant or recessive alleles.
- 14.2** Some human traits are caused by incomplete dominance of alleles.
- 14.3** Some human traits are caused by codominant alleles.
- 14.4** Many human genes have multiple alleles.
- 14.5** Some human traits are caused by multiple genes.
- 14.6** The environment influences genetic expression.



How are human genetic disorders inherited and studied?

- 14.7** A few human genetic disorders are caused by dominant alleles.
- 14.8** Most human genetic disorders are caused by recessive alleles.
- 14.9** Some human genetic disorders are caused by sex-linked alleles.
- 14.10** Pedigrees trace dominant, recessive, and sex-linked traits over generations.
- 14.11** Karyotypes show errors in chromosome structure or number in individuals.
- 14.12** Errors in chromosome number may result from errors in meiosis.
- 14.13** Humans may inherit abnormal numbers of autosomal chromosomes.
- 14.14** Humans may inherit abnormal numbers of sex chromosomes.
- 14.15** Humans may inherit chromosomes having structural changes.



How can individuals learn more about their genetic makeup?

- 14.16** Genetic information is available through genetic testing and counseling.
- 14.17** During pregnancy, various procedures can assess fetal genetic makeup.

